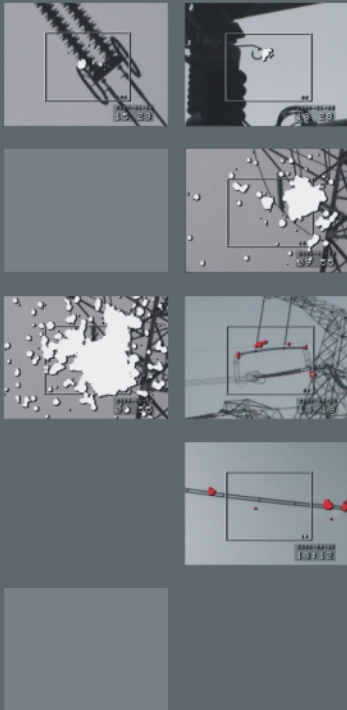


Corona Camera UV See TD 80



Corona Cameras detect, pinpoint and document corona, arcing and superficial partial discharge which occurring on high and medium voltage electrical lines, substations, generators, motors, distribution, and releasing ultraviolet while the integrity of numerous electrical lines, substation, and electrical equipments are being compromised by age, weather, and other factors. Corona cameras utilize the work principle to accept and analysis the UV signal to get UV and visible overlaid images to pinpoint corona, arc strength and location, and supply the reasonable proof for evaluating electrical equipments situation.

UVSee TD 80 is cutting-edge Patented product, developed and manufactured by ULIRvision. It can operate in daylight or at night. With high sensitivity, UV and visible overlaid images features, it is an ideal device to detect and capture corona, arc, surface discharge location with non destructive and non intrusive inspection for the electrical industry throughout the world. UVSee TD 80 is used in power plants, electrical utilities, high voltage laboratories, research institutes, high voltage railways, mines, private industries, and by services providers.



Features

- All-weather operation without anti-interferential from the sunlight.
- Solar blind for full daylight operation.
- Highest sensitivity detector 3×10^{-18} watt/cm² enables detection and displaying of corona emission.
- Detect and pinpoint Corona location.
- High quality color viewfinder display and high resolution color LCD.
- On-board data storage by SD card.
- UV image overlay on visible channel.
- Rugged design fit for harsh environment and extreme weather condition.

Contact Us

Zhejiang ULIRvision Technology Co., LTD.

Add: 2nd Floor Building D The Westlake International Plaza of Science & Technology, #391 Wener Road, Hangzhou 310012 Zhejiang China
Tel.: +86 (0)571 8720 9879 / 8512 2328 Fax.: +86 (0)571 8512 5358
Http: www.ulirvision.com E-mail: overseas@ulirvision.com

Marketing: Cindy CUI

Tel.: +86 (0)571 8720 9879
Mobile: +86 (0)139 5710 7545
E-mail: cindy.cui@ulirvision.com



Corona Camera UV See TD 80

Technical Specifications:

● Optical System Combined Output

– Video output format	NTSC/PAL
– Optical channels	Visible and UV channels overlaid
– Focus type	Automatic
– Focus distance	2m to infinity

● UV (Ultraviolet) Channel

– Minimum UV sensitivity	3x10 ⁻¹⁸ watt/cm ²
– Minimum Discharge detection	1.5 pC@8meters
– Minimum RIV detection	15dB μ V(RIV)@1MHZ
– Field of View (HX V)	5° x 3.75°
– Detector Life Span	No degradation
– Focus	Full auto for UV and visible channels.

● Visible Channel

– UV/Visible Overlay Accuracy	Better than 1 milliradian
– Minimum Visible Light Sensitivity	1 Lux
– Field of View	Default synchronized with UV channel
– Zoom factor	20 x optical, 12 x digital

● Display

– Type	Integral color LCD, viewfinder
– Brightness	450 cd/m ² reflective, adjustable
– Resolution	640 x 480 pixels, color
– Size	3.5" LCD
– Modes	Combined (UV & Visible), UV only, Visible only
– External Display	viewfinder- LCD option available

● Operator Interfaces

– Alarms	Audio, LED & Aux contacts
– Control input	Multi pushbutton
– Audio	Headphone output, microphone input

● Power System

– Power consumption	17 watt: 7.2V, 2.5A(battery)
– Battery type	7.2V rechargeable Li-ion battery
– Battery run time	Typical 90 minutes operation
– Battery location	On board, quick replaceable
– External supply	9-16 V 17 VA from car or mains adaptor

● Data Storage

– Storage media	Removable SD card
– Image format	JPEG compressed still image
– Storage capacity	1000 images per 2G memory
– File download	External cord reader or via USB
– Video storage	External via RCA & S-video output

● Environmental

– Operating temperature	-10°C to 50°C
– Storage temperature	-25°C to 60°C
– Humidity	Up to 90%, non condensing

● Physical Characteristics

– Weight	5.5kgs
– Dimension L x W x H	350 x 150 x 250 mm

● Packing Contents

– Standard	Corona camera, 2pcs rechargeable Li-ion battery, charger, SD card, manual, transport case, CVBS cable
------------	---

